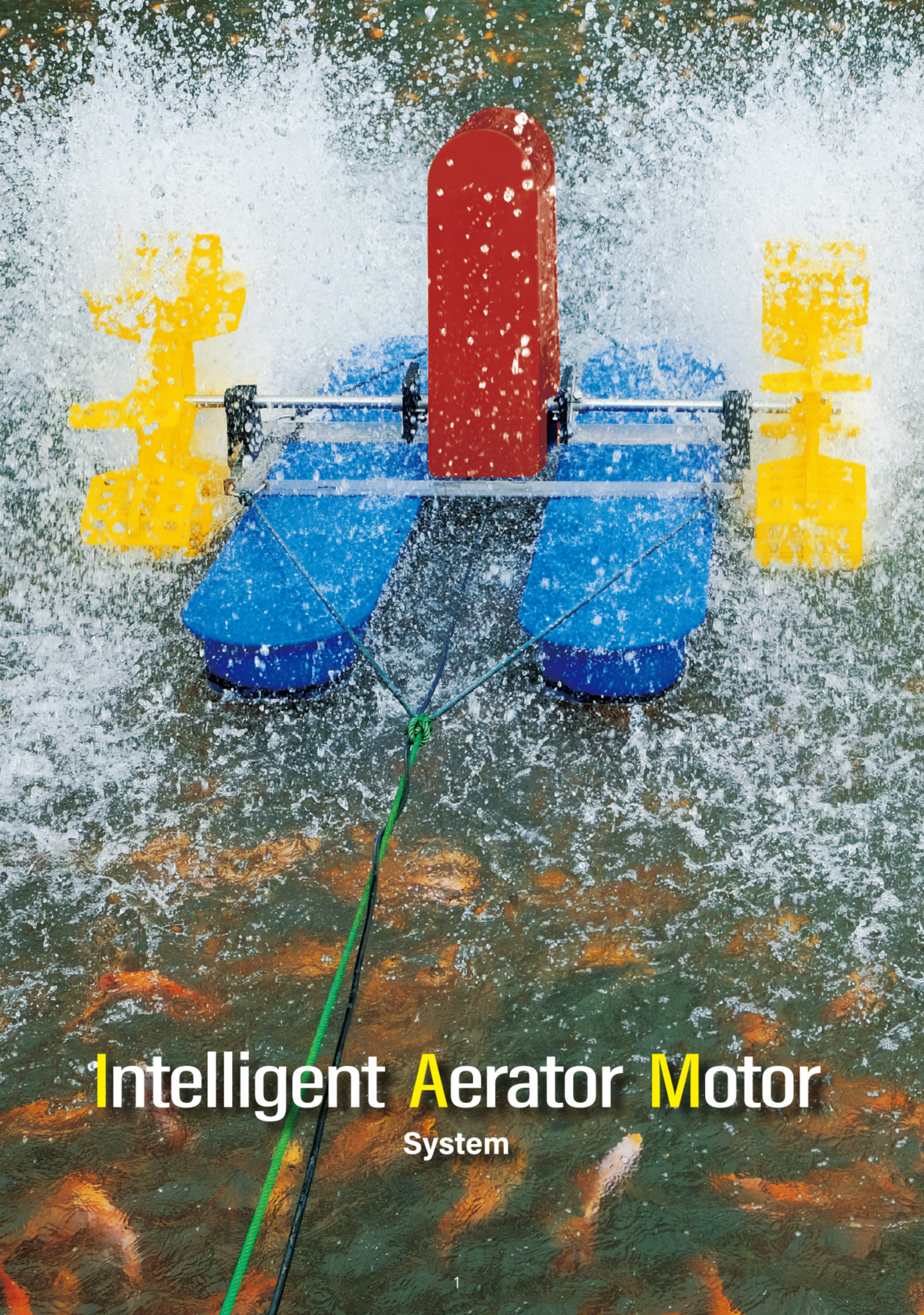
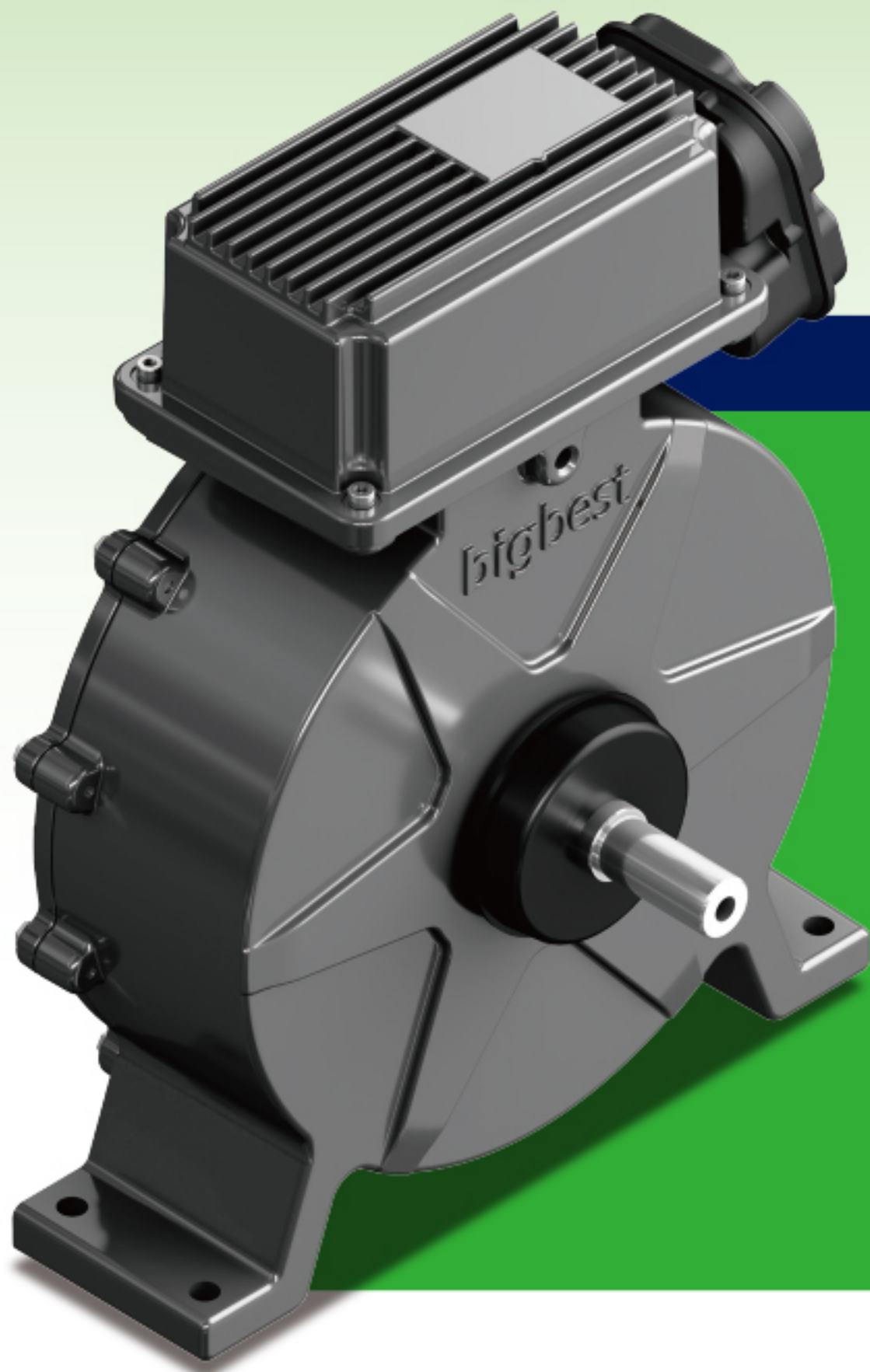


More Intelligent Less Energy  
Paddle Wheel Aerator Motor  
**for Aquaculture**

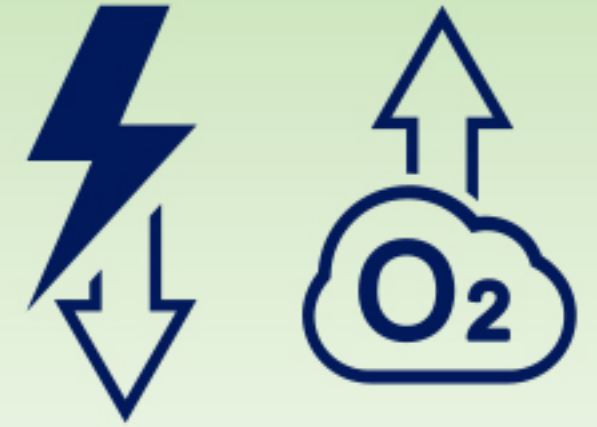
# Intelligent **Aerator** **Motor**



# Intelligent **A**erator **M**otor System



**Less Energy  
More Intelligent**



**Specification**

<b>Output Power</b>	1HP / 2HP
<b>Input Voltage</b>	220V / 380V / 3 Phase
<b>Speed (Adjustable)</b>	60 - 105rpm Remote Control (Optional)
<b>Motor Efficiency</b>	> 80%
<b>Outer Diameter</b>	Ø330mm
<b>Thickness</b>	120mm
<b>Shaft Material</b>	SUS 304
<b>Ingress Protection</b>	Better than IP67
<b>Housing Material</b>	Aluminum Alloy
<b>Net Weight</b>	25kg / 34kg

In order to extend the life of the Intelligent Aerator Motor and the safety of the equipment, the grounding wire must be connected during installation.

**Advantage**



**Waterproof**  
Better Than IP67

- **Waterproof** Patent Included
- **Ingress Protection** Better Than IP67



**Intelligent**  
Remote Control

- **Intelligent** Remote Control



**Energy Saving**  
Low Cost Ownership

- **Power Saving** **30 - 87%**
- **Input Voltage** 220V & 380V ±15%
- **Output Power** 1HP & 2HP
- **Speed Adjustable** 60 - 105rpm



**Reliable**  
Easy Installation

- **Reliable** Phase Failure Protection



## Intelligent Aerator Motor

# VS

## IE3 Induction AC Motor

### Characteristic

> 80%  
25kg / 34kg  
No Patrol Cost  
Adjustable 60 - 105rpm  
Direct Drive  
With

Efficiency  
Net Weight  
Maintenance Cost  
Speed Adjustable  
Direct Drive Motor  
Electrical Protection

45% - 50%  
48kg  
Amounts to USD36 Per Year  
Non-Adjustable 105rpm  
Indirect Drive  
Without

### Field Test Comparison



Fangliao,  
Pingtung County,  
Taiwan  
Salinity : 3%  
1HP / 2 Paddle Wheels



5,238kWh / Year  
Energy Saving  
Over 37.5%



Current Clamp

Energy  
Consumption



Current Clamp

8,375kWh / Year

### Energy Saving

Assume the Power Factor (PF)  
of **bigbest** is 0.6

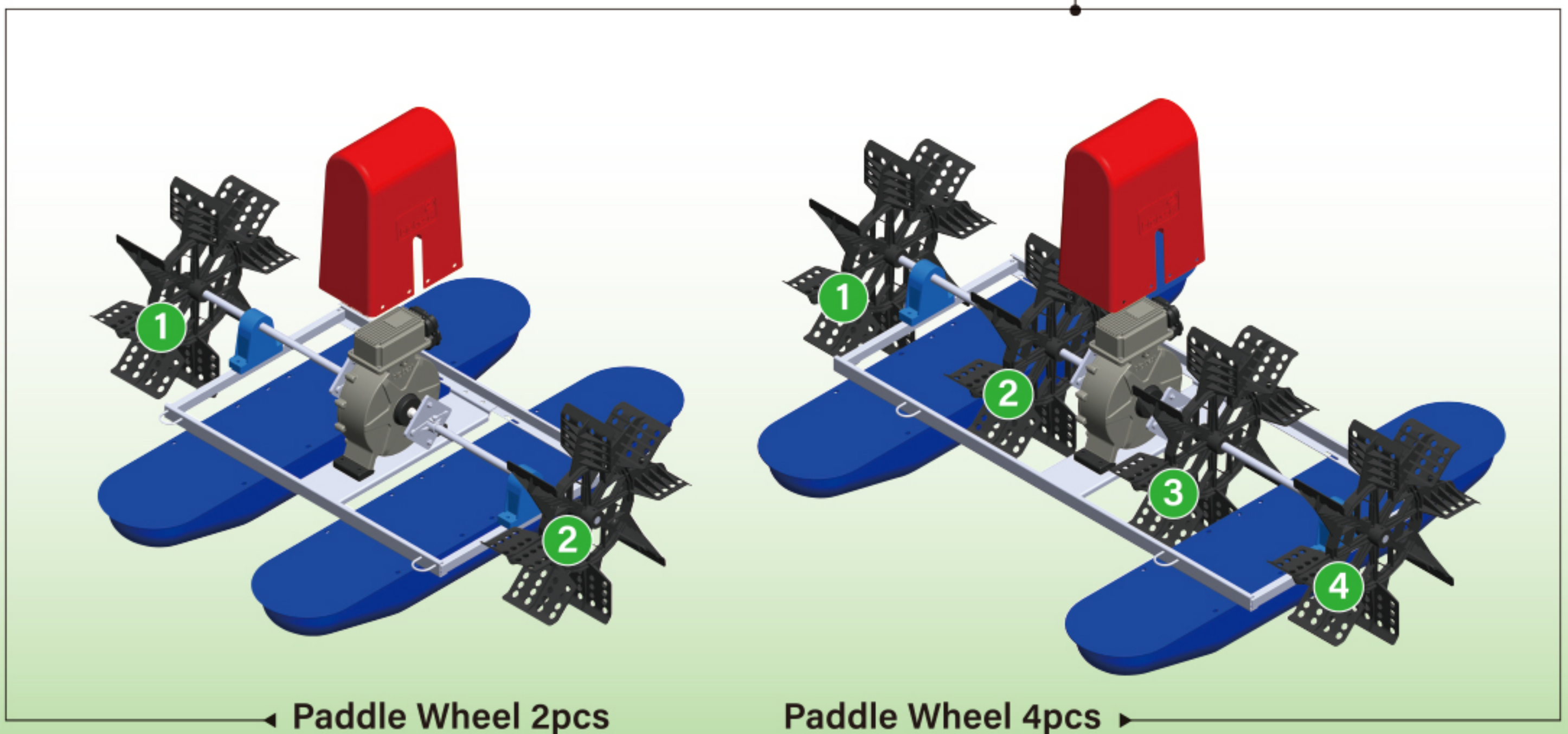
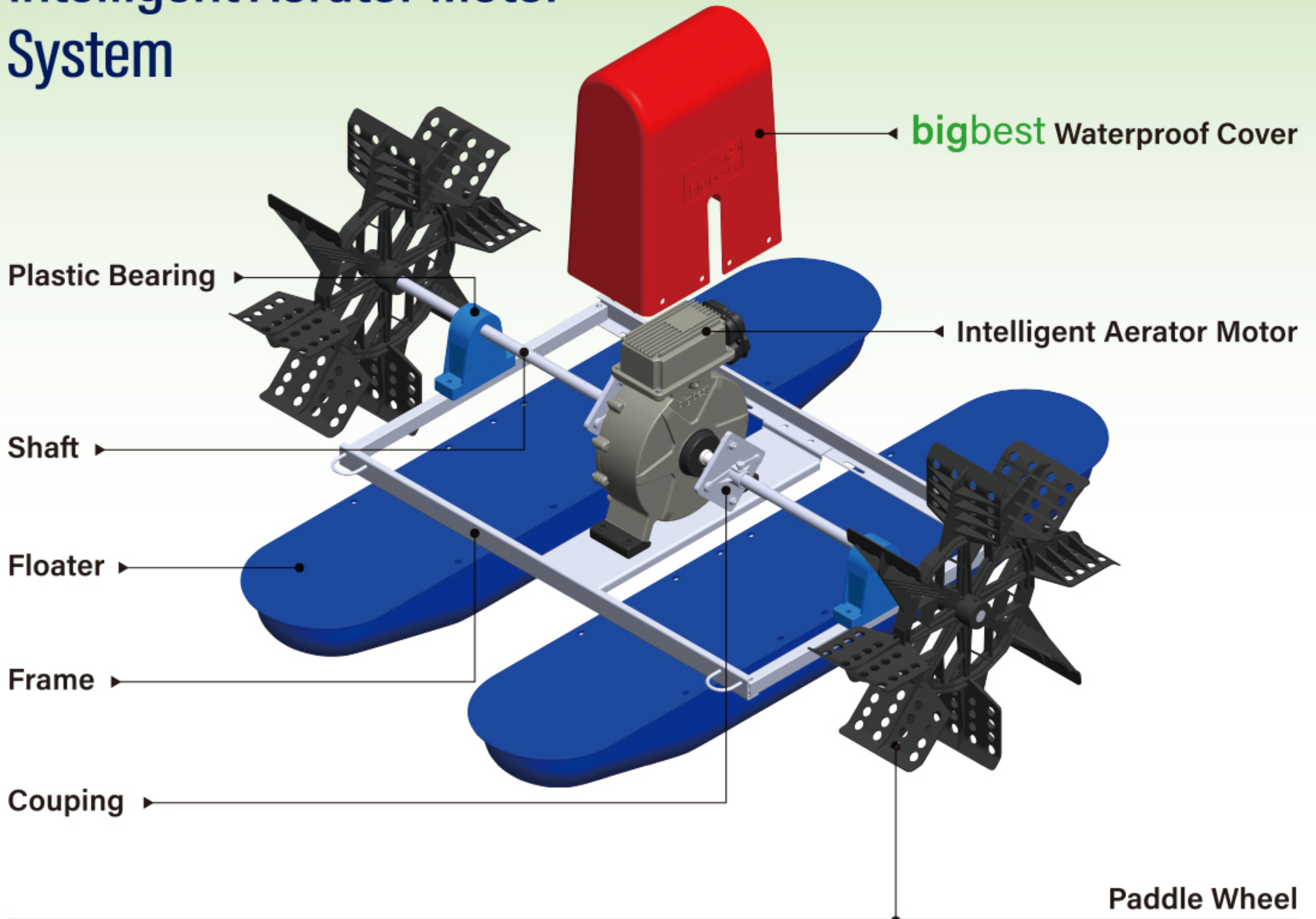
- 105rpm ● 30% - 50%
- 80rpm ● 70% - 80%
- 60rpm ● 87% - 90%

Assume the Power Factor (PF)  
of AC Induction Motor is 0.85

- 105rpm
- 105rpm
- 105rpm



# Intelligent Aerator Motor System





## Waterproof and Anti-Rust System

### Anti-corrosion

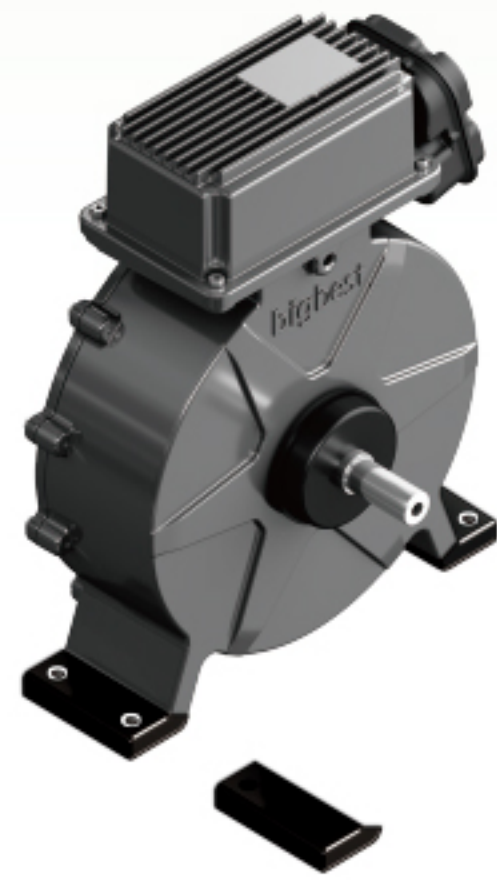
Strengthen special coatings, surface treatment and material application technology to achieve acid and alkali corrosion resistance.

### Waterproof Technology

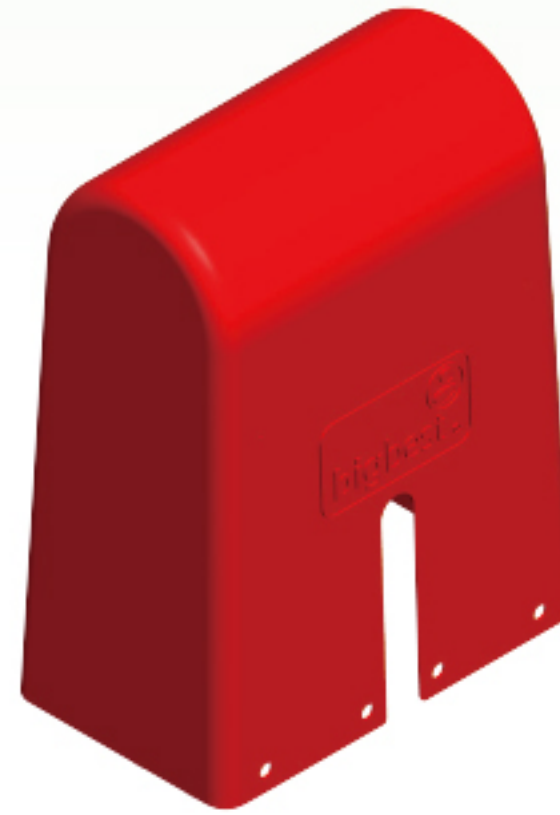
The use of rubber gaskets, housing, the biggest special-sealed waterproof cover and insulating rubber bumper, it can achieve a waterproof level better than IP67.



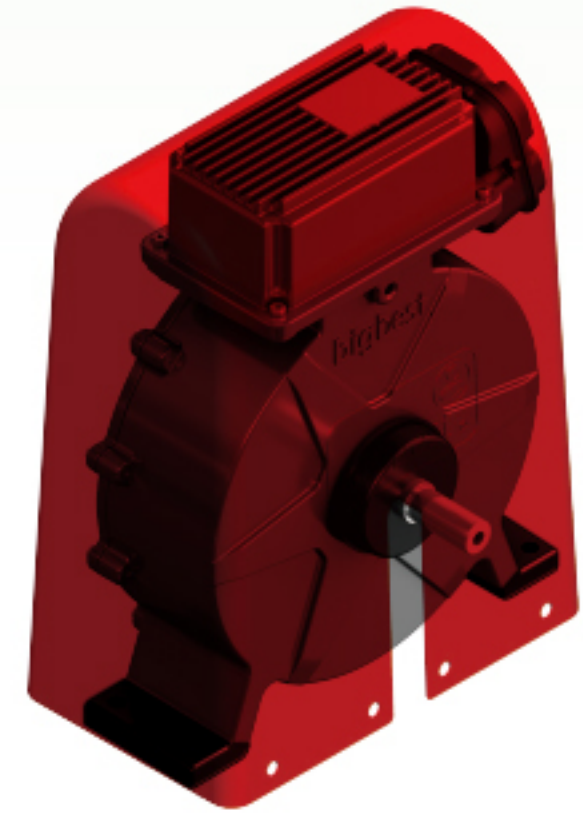
Intelligent Aerator Motor



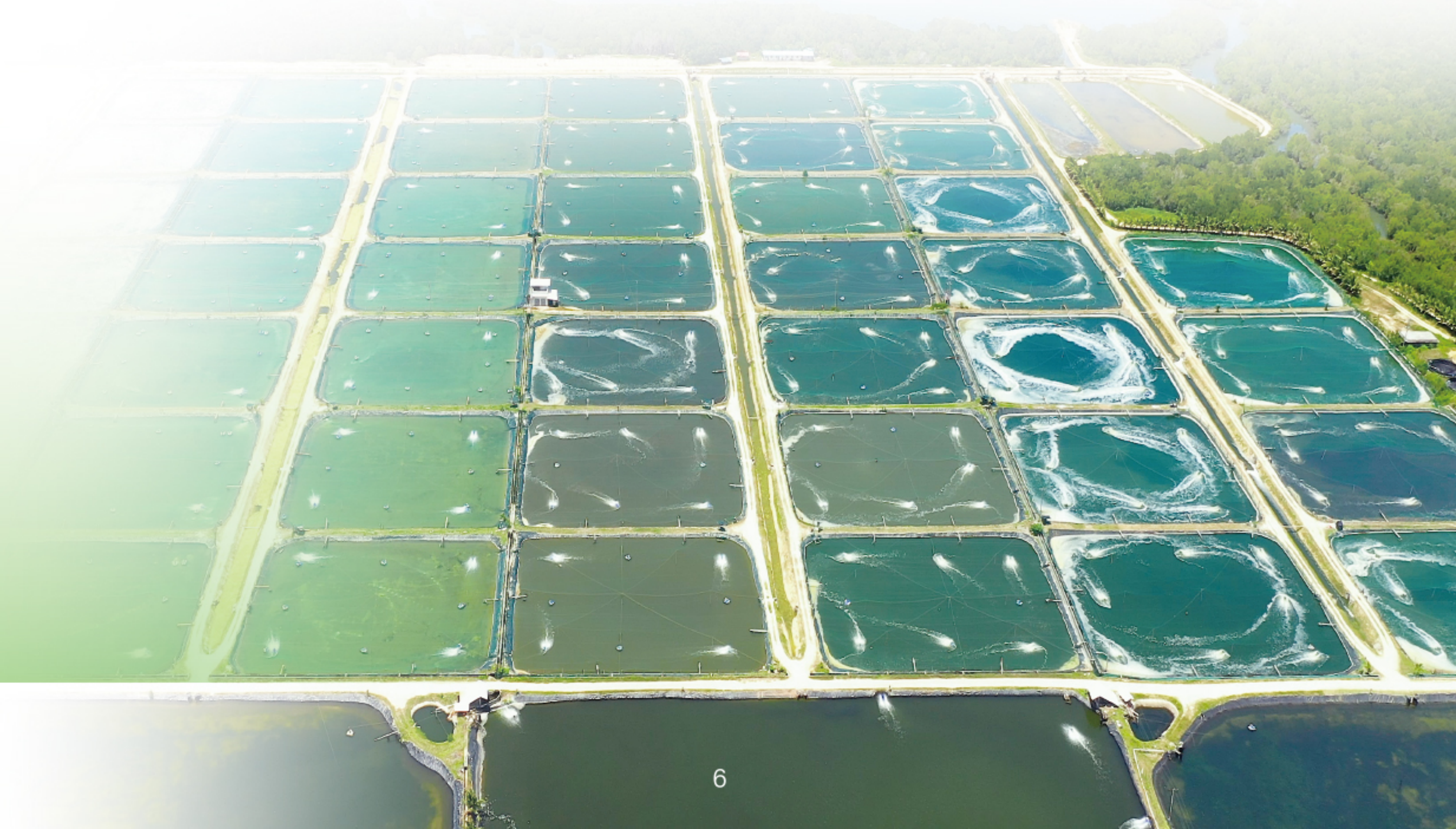
Insulating Rubber Bumper



**bigbest** Waterproof Cover

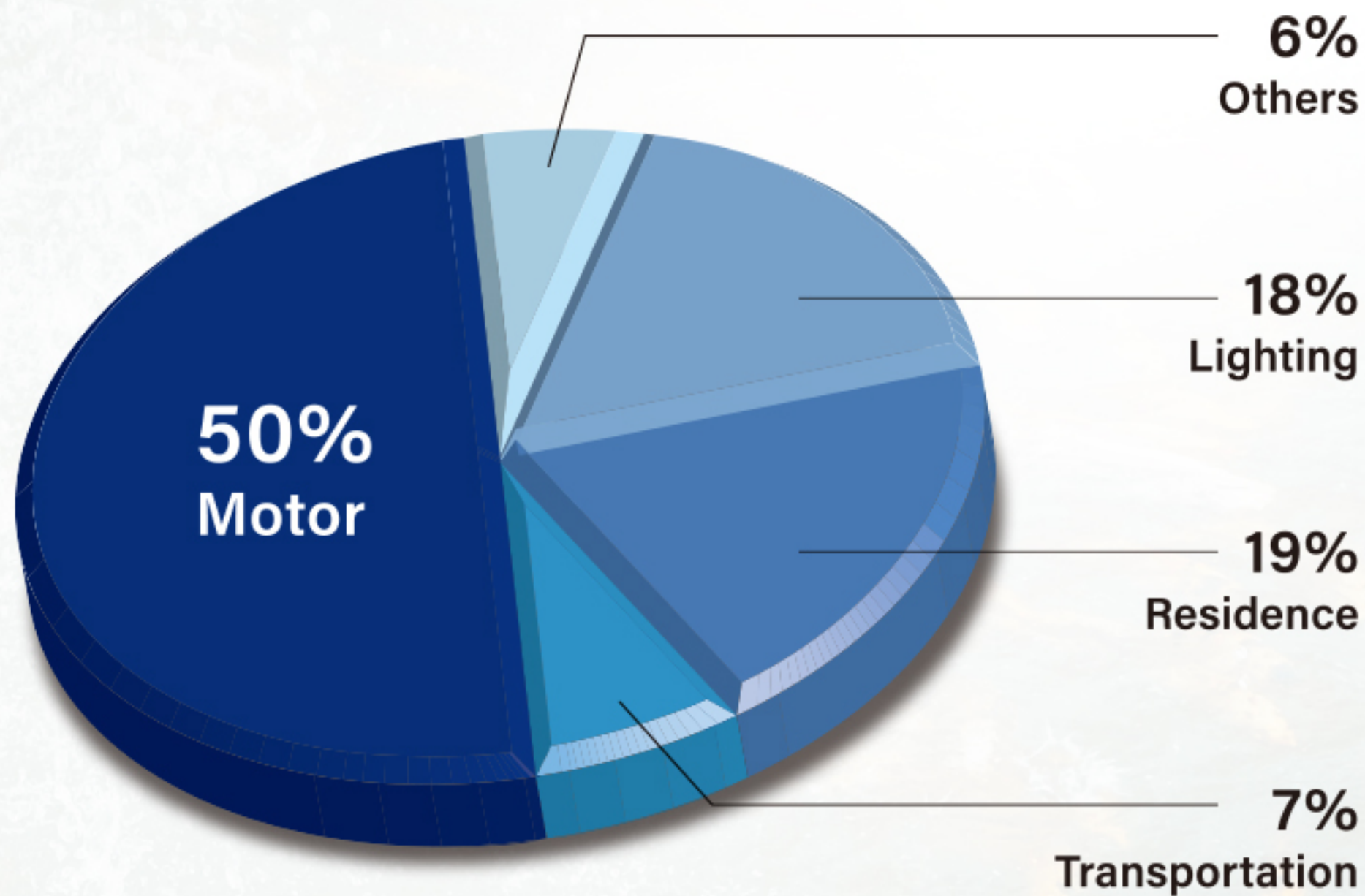


Ensure Anti-rust Effect



**IEA(International Energy Agency) Statistics  
Global Electricity Consumption**

China Electricity Consumption:  
Motor Consumes 70%  
(More Factories in China)  
EU and Electricity Consumption:  
Motor Consumes 60%



In view of the rapidly diminishing natural resources on the earth, environmental conservation, "Green" energy and energy renewal are among the most important issues for future development. Electrical motors convert electricity into kinetic motion, and are widely used in consumer products. Its applications in industrial equipment are even more versatile. According to the statistics of IEA (International Energy Agent), the energy used to drive motors accounts for more than 50% of global power consumption. In order to reduce the energy consumption used in motors, it is necessary to adopt BLDC motor technology.

**bigbest** integrates the design, devices, and manufacturing for a high efficiency, low cost, and eco-friendly intelligent motor to fulfill the growing demand in energy-saving market, including residential, commercial, and industrial applications.

**bigbest** shall make a commitment for a "Greener" world with our **Blue-Energy-Saving-Technology** motors hereafter.



[bigbestsol.com](http://bigbestsol.com)

## **bigbest solutions, inc.**

3F, No. 27, Keya Rd., Daya Dist., Taichung City 42881,

**TAIWAN (CTSP)**

**T** +886-4-2566-4105

**F** +886-4-2568-4291

[sales@bigbest.com.tw](mailto:sales@bigbest.com.tw)